



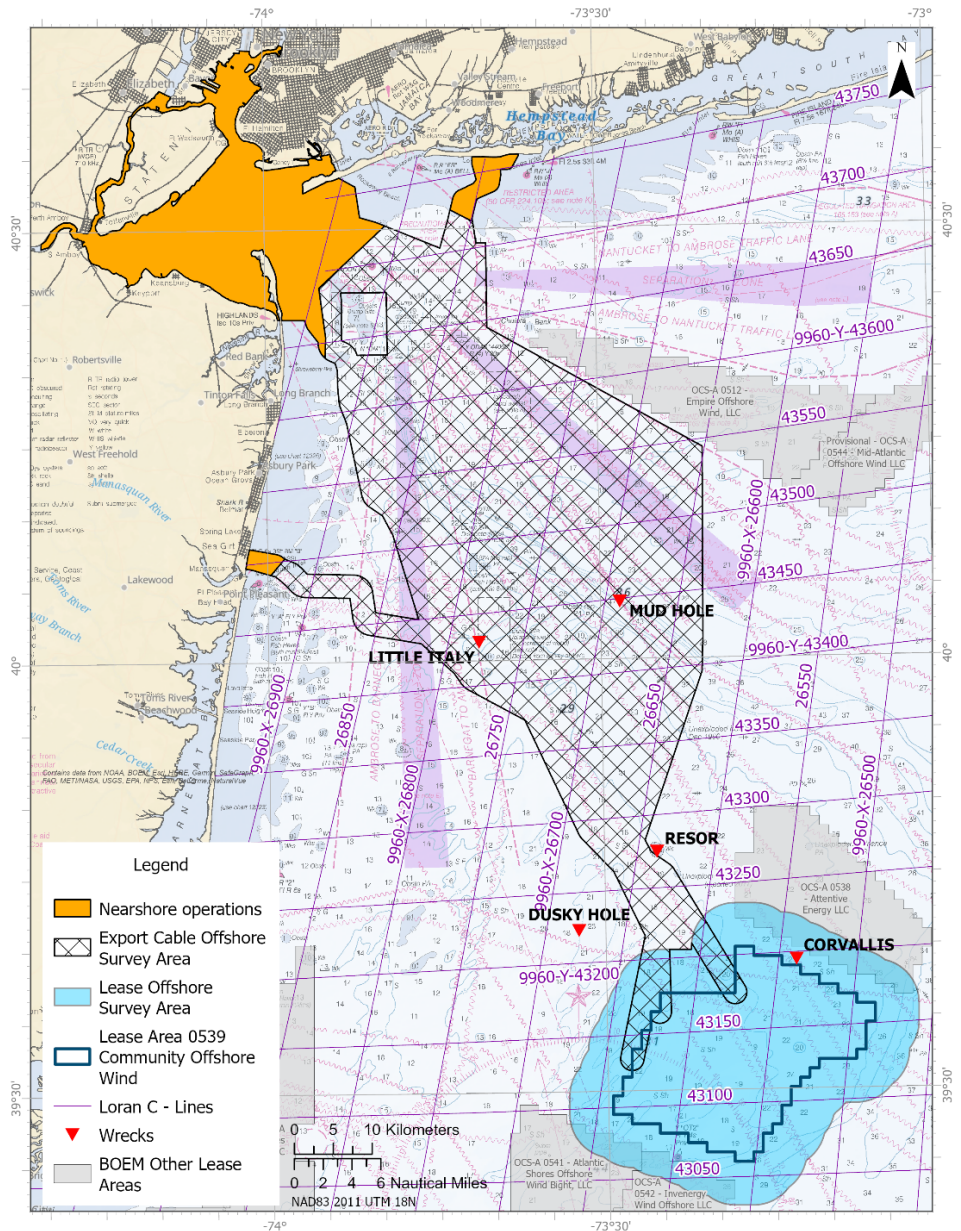
GEOPHYSICAL AND GEOTECHNICAL SURVEY ACTIVITIES

Community Offshore Wind is updating and amending [Fisheries Notice 2024-04](#) to advise fishermen and other interested parties of adjusted geographic scope and timeframes for survey activities as described below.

The R/V WESTERLY is continuing high resolution geophysical survey activities within nearshore (<20 meters water depth) portions of potential export cable corridors through August 2024.

The M/V HOS BROWNING and M/V FUGRO EXPLORER will continue geotechnical sampling and in-situ testing of the seabed within the lease area. The M/V FUGRO EXPLORER will also sample at select locations along potential export cable routes. No towed gear will be used during these survey operations. Vessels will be stationary up to approximately 48 hours. Completion is expected by January 31, 2025.

Information from survey activities will be used to characterize the seabed, refine knowledge of bottom features or obstructions, and inform lease area and export cable route development. The lease area is located 32 nautical miles east of Barnegat Inlet, NJ and 56 nautical miles south of Long Beach, NY. Fishermen planning to fish fixed gear in survey areas are encouraged to contact Fisheries Liaisons Sean Lucey or Michelle Duval to coordinate activities in advance. A local commercial fishing vessel, F/V ANNICE MARIE, will scout for fishing gear in advance of survey operations as needed, and will monitor VHF 16 during scouting operations.



CONTACTS

Sean Lucey, Fisheries Liaison
Cell: 508.524.9444

SeanL@communityoffshorewind.com

Michelle Duval, Fisheries Liaison
Cell: 919.601.3798

MichelleD@communityoffshorewind.com

COMMUNITY OFFSHORE WIND FISHERIES NOTICE 2024-05

- Survey vessels will be limited in their maneuverability when conducting operations. A 1.0 nautical mile closest point of approach (CPA) is requested for offshore vessels and a 0.5 nautical mile CPA for nearshore vessels.
- Survey vessels will monitor VHF channel 16 and offshore survey vessels will have Onboard Fisheries Liaisons to communicate and coordinate with the fishing fleet.
- Survey vessels have Protected Species Observers (PSOs) or crew observers onboard to monitor for protected species during all vessel activities and transits, and ensure required protective measures and avoidance maneuvers are implemented if protected species are observed.
- Vessels may transit to the Sandy Hook, NJ anchorage area to shelter during inclement weather and do not tow survey equipment when running weather patterns outside of the survey areas.



R/V WESTERLY

Vessel Flag: USA
MMSI: 368255040
VHF: Channel 16
Bridge phone: N/A
Email: N/A

Call sign: WDM9690
LOA: 50 ft



M/V HOS BROWNING

Vessel Flag: Mexico
MMSI: 345090011
VHF: Channel 16
Bridge phone: +1 985 773 9932
Email: browningcapt@hornbeckoffshore.com

Call sign: XCBK8
LOA: 292 ft



M/V FUGRO EXPLORER

Vessel Flag: Mexico
MMSI: 357456000
VHF: Channel 16
Bridge phone: +1 713 369 4472
Email: bridge@epr.fugro.com

Call sign: 3FEV9
LOA: 261 ft

SCOUT VESSEL



F/V ANNICE MARIE

Vessel Flag: USA
Call sign: WDD5154
MMSI: 367154420
VHF: Channel 16

For additional information and to sign up for updates, please visit communityoffshorewind.com/fisheries.