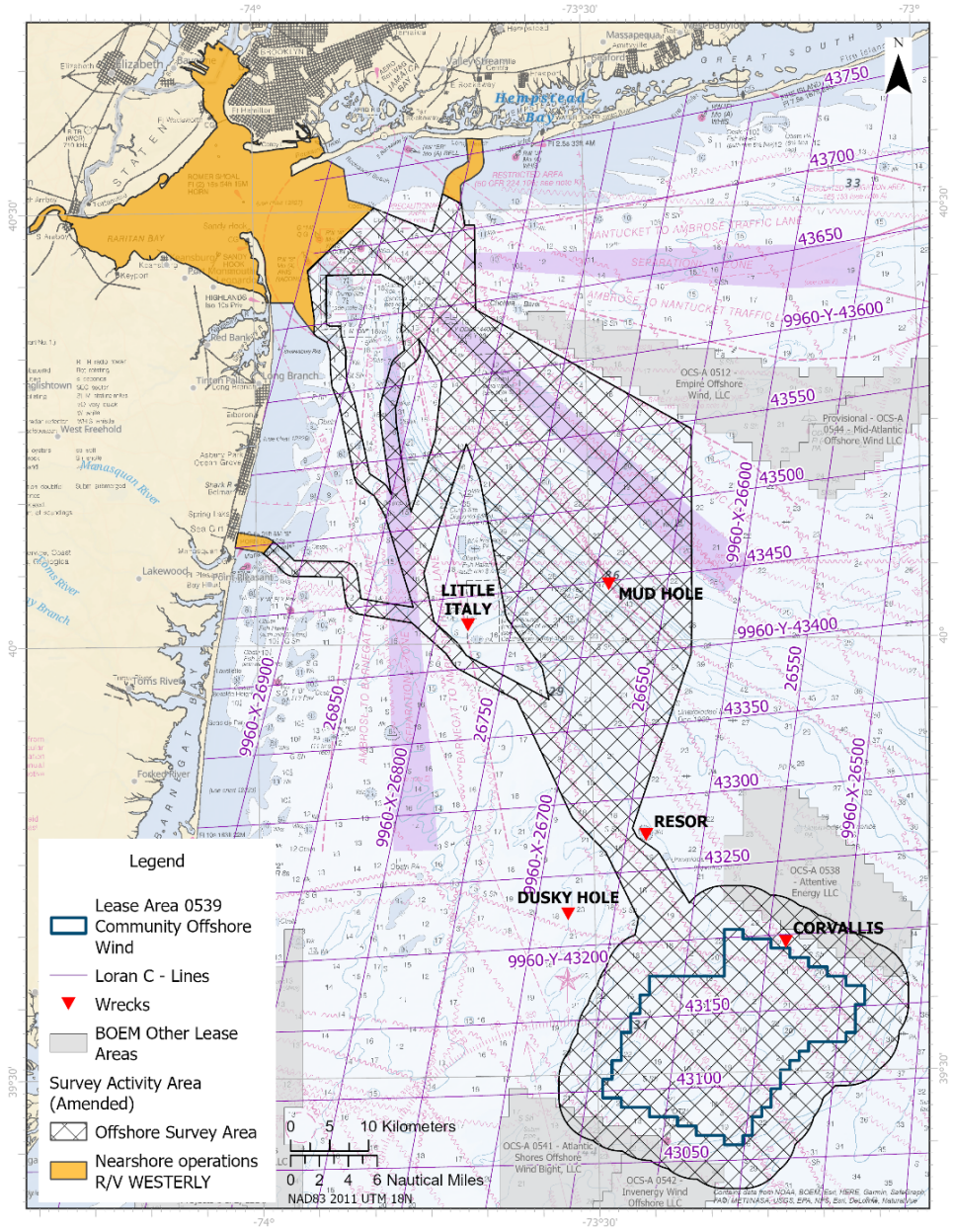




## BENTHIC, GEOPHYSICAL, AND GEOTECHNICAL SURVEY ACTIVITIES

Community Offshore Wind is updating and amending [Fisheries Notice 2023-05](#) to advise fishermen and other interested parties of adjusted timeframes for current survey activities. Additional survey activities are expected to begin in November as described below.

The M/V GO PURSUIT will continue offshore benthic survey operations through November 2023. The R/V WESTERLY is continuing high resolution geophysical survey activities within nearshore portions (<20 meters water depth) of potential export cable corridors through December 2023. The M/V SEA GULL is conducting shallow geotechnical sampling in the lease area and offshore portions of potential export cable corridors through December 2023, using a seabed frame lowered from the vessel. The M/V SANCO SWIFT is collecting bathymetric and ultra-high resolution seismic data within the lease area and along centerlines of potential export cable corridors through May 2024 using a towed array of acoustic sources and receivers. The R/V BELLA MARIE will commence nearshore (<20 meters) benthic sampling on or after November 21 and continue through mid-December. The R/V SHEARWATER will begin shallow geotechnical sampling in nearshore (<20 meters water depth) portions of potential export cable corridors on or after November 29 and continue through January 2024. Information from survey activities will be used to characterize the seabed, refine knowledge of bottom features or obstructions, and inform future lease area and export cable route development.



### CONTACTS

Deirdre Boelke, Fisheries Liaison  
Cell: 978.518.0638

[DeirdreB@communityoffshorewind.com](mailto:DeirdreB@communityoffshorewind.com)

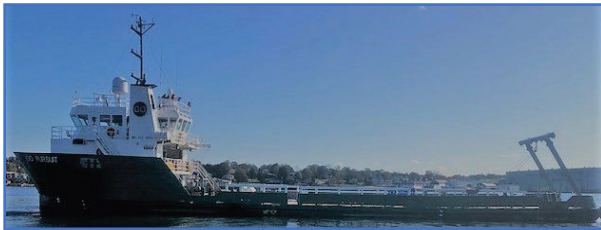
Michelle Duval, Fisheries Liaison  
Cell: 919.601.3798

[MichelleD@communityoffshorewind.com](mailto:MichelleD@communityoffshorewind.com)

## COMMUNITY OFFSHORE WIND FISHERIES NOTICE 2023-06

The lease area is located 32 nautical miles east of Barnegat Inlet, NJ and 56 nautical miles south of Long Beach, NY. Fishermen planning to fish fixed gear in survey areas are encouraged to contact Fisheries Liaisons Deirdre Boelke or Michelle Duval to coordinate activities in advance. A local commercial fishing vessel, F/V ANNICE MARIE, will scout for fishing gear in advance of survey operations and will monitor VHF 16 during scouting operations.

- **Survey vessels will be limited in their maneuverability when conducting operations. A 1.0 nautical mile closest point of approach (CPA) is requested for the M/V SANCO SWIFT and a 0.5 nautical mile CPA for other vessels.**
- **Survey vessels will monitor VHF channel 16 and offshore geophysical and benthic survey vessels will have Onboard Fisheries Liaisons to communicate and coordinate with the fishing fleet.**
- Survey vessels have Protected Species Observers (PSOs) or crew observers onboard to monitor for protected species during all vessel activities and transits, and ensure required protective measures and avoidance maneuvers are implemented if protected species are observed.
- Vessels may transit to the Sandy Hook, NJ anchorage area to shelter during inclement weather and do not tow survey equipment when running weather patterns outside of the survey areas.



### ***M/V GO PURSUIT***

Vessel Flag: USA  
MMSI: 367191410  
VHF: Channel 16  
Bridge phone: +1 337-205-7400  
Email: [gopursuit@guiceoffshore.com](mailto:gopursuit@guiceoffshore.com)

Call sign: WDH6498  
LOA: 170 ft



### ***R/V WESTERLY***

Vessel Flag: USA  
MMSI: 368255040  
VHF: Channel 16  
Bridge phone: N/A  
Email: N/A

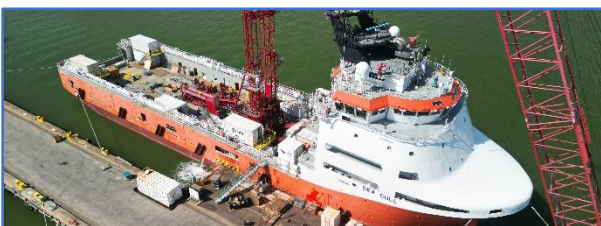
Call sign: WDM9690  
LOA: 50 ft



### ***M/V SANCO SWIFT***

Vessel Flag: Gibraltar  
MMSI: 236111851  
VHF: Channel 16  
Bridge phone: +47 23 67 85 04/03  
Email: [bridge.swift@sanco.no](mailto:bridge.swift@sanco.no)

Call sign: ZDKY8  
LOA: 315 ft



### ***M/V SEA GULL***

Vessel Flag: Marshall Islands  
MMSI: 538010424  
VHF: Channel 16  
Bridge phone: +1 281-928-0903  
Email: [gull.captain@remoyship.no](mailto:gull.captain@remoyship.no)

Call sign: LAGK8  
LOA: 292 ft

**VESSEL INFORMATION CONTINUED ON NEXT PAGE**

## COMMUNITY OFFSHORE WIND FISHERIES NOTICE 2023-06



### *R/V BELLA MARIE*

Vessel Flag: USA  
MMSI: 338417507  
VHF: Channel 16  
Bridge phone: +1 609-204-1902  
Email: N/A

Call sign: NJ8433HP  
LOA: 40 ft



### *R/V SHEARWATER*

Vessel Flag: USA  
MMSI: 368528000  
VHF: Channel 16  
Bridge phone: +1 850-621-6200  
Email: [shearwaterpartychief@alpineocean.com](mailto:shearwaterpartychief@alpineocean.com)

Call sign: WDF5838  
LOA: 110 ft

## SCOUT VESSEL



### *F/V ANNICE MARIE*

Vessel Flag: USA  
Call sign: WDD5154  
MMSI: 367154420  
VHF: Channel 16

For additional information and to sign up for updates, please visit [communityoffshorewind.com/fisheries](https://communityoffshorewind.com/fisheries).