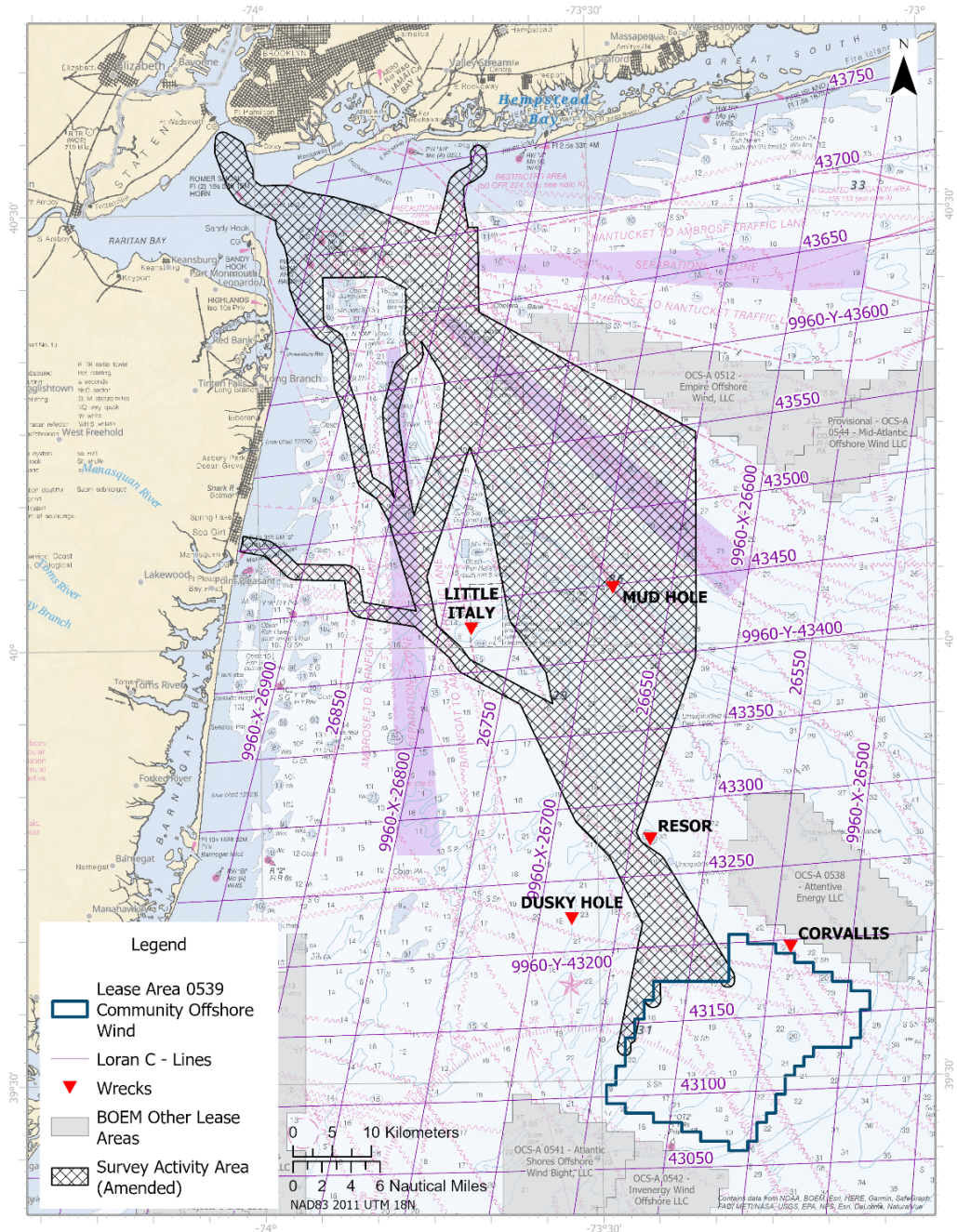




## POTENTIAL EXPORT CABLE CORRIDORS – GEOPHYSICAL SURVEYS

Community Offshore Wind is updating [Fisheries Notice 2023-02](#), issued June 9, 2023, to include additional area for initial High Resolution Geophysical surveys of potential offshore export cable corridors. The expanded area includes a portion of the NY/NJ harbor approach and additional area adjacent to the lease site, and will provide flexibility to optimize potential cable routing relative to multiple constraints, including fisheries and other marine uses. One or more corridors within the eastern portion of the study area may be surveyed rather than the entire area. Fishermen planning to fish fixed gear in survey areas are encouraged to contact Fisheries Liaisons Deirdre Boelke or Michelle Duval to coordinate activities in advance.

Reconnaissance of potential export cable corridors is expected to last through August 31, 2023 and includes multibeam bathymetry, side scan sonar imaging, magnetic measurements, and shallow sub-bottom profiling. Routes may be surveyed in segments to facilitate coordination with other marine uses. Information from these activities will be used to characterize the seabed, refine knowledge of bottom features or obstructions, and inform future export cable route development.



### CONTACTS

Deirdre Boelke, Fisheries Liaison  
Cell: 978.518.0638

[DeirdreB@communityoffshorewind.com](mailto:DeirdreB@communityoffshorewind.com)

Michelle Duval, Fisheries Liaison  
Cell: 919.601.3798

[MichelleD@communityoffshorewind.com](mailto:MichelleD@communityoffshorewind.com)

## COMMUNITY OFFSHORE WIND FISHERIES NOTICE 2023-01

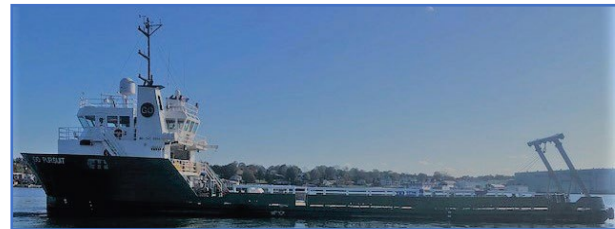
The lease area is located 32 nautical miles east of Barnegat Inlet, NJ and 56 nautical miles south of Long Beach, NY. Offshore, it is positioned east of the Star Slough and just south of the CORVALLIS wreck. Fishermen fishing mobile gear or deploying tended, fixed fishing gear in survey areas when survey vessels are present are requested to coordinate operations through direct bridge-to-bridge communications with survey vessels. A local commercial fishing vessel, F/V ANNICE MARIE, will also scout the area for fishing gear in advance of survey operations and will monitor VHF 16 during scouting operations.

- Two 170-foot vessels, the GO PURSUIT and GO DISCOVERY, are surveying the lease area and export cable routes under consideration. The vessels will be towing survey equipment astern and request a 0.5 nautical mile closest point of approach.
- **Survey vessels will monitor VHF channel 16 and will each have an Onboard Fisheries Liaison to communicate and coordinate with the fishing fleet.**
- Both survey vessels have Protected Species Observers (PSOs) onboard who monitor for the presence of protected species during all vessel activities and transits, day and night. PSOs ensure required protective measures and avoidance maneuvers are implemented if protected species are observed.
- During inclement weather, vessels may transit to the Sandy Hook, NJ anchorage area to shelter until survey activities can be safely resumed. Vessels do not tow survey equipment when running weather patterns outside of the lease area or potential export cable areas.



### ***M/V GO DISCOVERY***

Vessel Flag: USA  
Call sign: WDK4727  
MMSI: 368058130  
Bridge phone: (+1) 337-706-5602  
Email: [godiscovery@guiceoffshore.com](mailto:godiscovery@guiceoffshore.com)  
VHF: Channel 16



### ***M/V GO PURSUIT***

Vessel Flag: USA  
Call sign: WDH6498  
MMSI: 367191410  
Bridge phone: (+1) 337-205-7400  
Email: [gopursuit@guiceoffshore.com](mailto:gopursuit@guiceoffshore.com)  
VHF: Channel 16



### ***F/V ANNICE MARIE***

Vessel Flag: USA  
Call sign: WDD5154  
MMSI: 367154420  
VHF: Channel 16

Benthic and geotechnical survey campaigns are expected to begin later this summer and will be coordinated with ongoing and future geophysical surveys within the lease and potential export cable areas. Community Offshore Wind will provide fisheries notices and updates prior to the start of additional survey activities.

**For additional information and to sign up for updates, please visit**  
[communityoffshorewind.com/fisheries](https://communityoffshorewind.com/fisheries).